

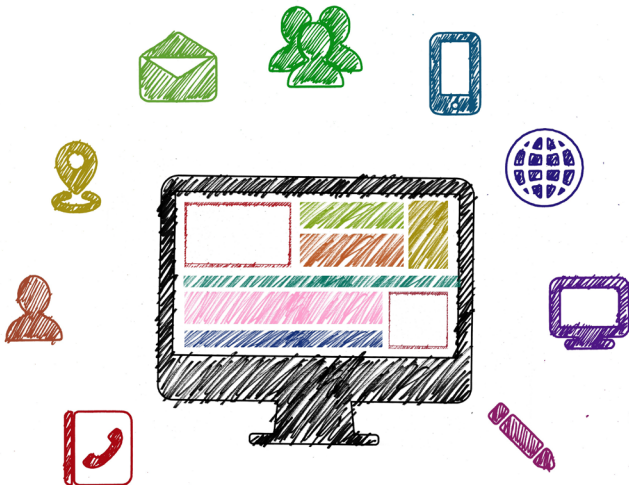
WRTG 3015

Professional Writing

Fall 2021 Multiple Hybrid Sections Offered

Prepares students for professional writing practice by emphasizing problem solving in organizational contexts, writing for multiple audiences, and writing with visual and numerical data. Includes collaborative projects. Includes service learning.

CEL: Community Engaged Learning



Students must take WRTG 2010 or equivalent prior to taking this course.

Fulfills Upper Division Communication/Writing (CW)