

WRTG 2040

INTRO TO WRITING STUDIES

Spring 2022 TuTh 3:40pm - 5:00pm

Writing 2040 offers an introduction to the academic discipline of writing studies, which treats writing as both an activity and a subject of scholarly inquiry. Through reading and discussing contemporary writing studies scholarship and conducting their own primary research projects, students will encounter transformative and often troublesome threshold concepts that are key to understanding how writing studies scholars think and talk about writing. This course is intended primarily for first-year students and sophomores exploring a possible major in Writing & Rhetoric Studies.



**DEPARTMENT OF WRITING
& RHETORIC STUDIES**

THE UNIVERSITY OF UTAH

225 S Central Campus Drive Room 3700
Salt Lake City, UT 84112
(801) 581-7090 | <http://www.writing.utah.edu>

WRTG 2905

COLLABORATIVE WRITING STUDIO

Spring 2022 Section 003 Online

EARN ONE (1) CREDIT HOUR

Sign up for WRTG 2905

Facilitated by an experienced graduate student and supervised by the Writing Center Director

WHO CAN JOIN?

ALL students who want personalized small-setting support on their college writing assignments

WHAT WILL I GET OUT OF IT?

Become a more confident and skilled writer

Collaborate with peers and learn to respond to each other's writing critically

Develop meta-knowledge to help you become more engaged writers



**DEPARTMENT OF WRITING
& RHETORIC STUDIES**

THE UNIVERSITY OF UTAH

225 S Central Campus Drive Room 3700
Salt Lake City, UT 84112
(801) 581-7090 | <http://www.writing.utah.edu>

WRTG 3011

Writing in the Arts & Humanities

SPRING 2022 ONLINE OR IN-PERSON

Prepares students for professional and public careers in the Arts and Humanities by emphasizing reading and writing arguments and the kinds of writing needed in further study and executive positions: summaries, analyses, proposals, research notes, personal essays, reviews and hybrid genres. Explores multiple media and genres through collaborative projects, electronic writing, instruction in revision and editing, and exploratory writing to discover ideas.



Students must take WRTG 2010 or equivalent prior to taking this course.

Fulfills Upper Division Communication/Writing (CW)



**DEPARTMENT OF WRITING
& RHETORIC STUDIES**

THE UNIVERSITY OF UTAH

225 S Central Campus Drive Room 3700
Salt Lake City, UT 84112

(801) 581-7090 | <http://www.writing.utah.edu>

WRTG 3012

WRITING IN THE SOCIAL SCIENCES

Spring 2022 Online

Designed to facilitate thinking and writing in the social sciences. Focuses on using sources to develop critical thinking on issues, forming one's own position about disciplinary problems, and creating arguments using rhetorical conventions associated with specific disciplines.



Students must take WRTG 2010 or equivalent prior to taking this course.

Fulfills Upper Division Communication/Writing (CW)



**DEPARTMENT OF WRITING
& RHETORIC STUDIES**

THE UNIVERSITY OF UTAH

225 S Central Campus Drive Room 3700
Salt Lake City, UT 84112
(801) 581-7090 | <http://www.writing.utah.edu>

WRTG 3014

Writing in the Sciences

Spring 2022 Online or In-Person

Designed to help students in the sciences develop the skills needed for scientific research and communication. Provides students with the opportunity to write in the variety of forms that they are likely to encounter in their professional lives (i.e. memos, proposals, reports, presentations) in a scientific context.



Students must take WRTG 2010 or equivalent prior to taking this course.

Fulfills Upper Division Communication/Writing (CW)

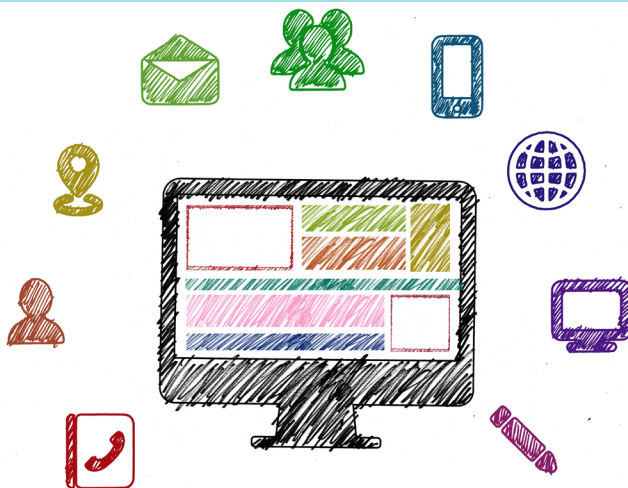
WRTG 3015

Professional Writing

Spring 2022 Online or In-Person

Prepares students for professional practice by emphasizing problem solving in organizational contexts, writing for multiple audiences, and writing with visual and numerical data. Includes collaborative projects. Includes service learning.

CEL: Community Engaged Learning



Students must take WRTG 2010 or equivalent prior to taking this course.

Fulfills Upper Division Communication/Writing (CW)



**DEPARTMENT OF WRITING
& RHETORIC STUDIES**

THE UNIVERSITY OF UTAH

225 S Central Campus Drive Room 3700
Salt Lake City, UT 84112
(801) 581-7090 | <http://www.writing.utah.edu>

WRTG 3016

BUSINESS WRITING

Spring 2022 Online

Focuses on strategies for communicating successfully with business audiences. Students employ composition technologies to prepare different types of workplace texts, including emails, memos, proposals, reports, resumes and presentations. Emphasis on critical thinking and problem solving in a business context.



Students must take WRTG 2010 or equivalent prior to taking this course.

Fulfills Upper Division Communication/Writing (CW)



**DEPARTMENT OF WRITING
& RHETORIC STUDIES**

THE UNIVERSITY OF UTAH

225 S Central Campus Drive Room 3700
Salt Lake City, UT 84112

(801) 581-7090 | <http://www.writing.utah.edu>

WRTG 3018: BLACK MIRROR

Spring 2022 Online



Often described as a modern day *Twilight Zone*, the BBC television program *Black Mirror* considers the increasing footprint of new technologies on our material, social, cultural, and relational lives. WRTG 3018 provides an introduction to the critical analysis of popular culture by utilizing the series as primary text and point of reference. Specifically, WRTG 3018 aims to:

- Survey the paradigms of mass culture and cultural theory
- Decode the visual, semiotic, and cinematographic elements that convey meaning
- Read *Black Mirror* from different theoretical perspectives
- Develop meaningful claims and support those claims with authoritative research, logical reasoning, and thoughtful analysis
- Engage the series critically and creatively, encouraging students to become more active critics and contributors to pop culture discourse

To accomplish this, students will complete a series of written, multimodal, and presentation assignments.

Students must take WRTG 2010 or equivalent prior to taking this course.

Fulfills Humanities Exploration (HF)



DEPARTMENT OF WRITING
& RHETORIC STUDIES

THE UNIVERSITY OF UTAH

225 S Central Campus Drive Room 3700
Salt Lake City, UT 84112

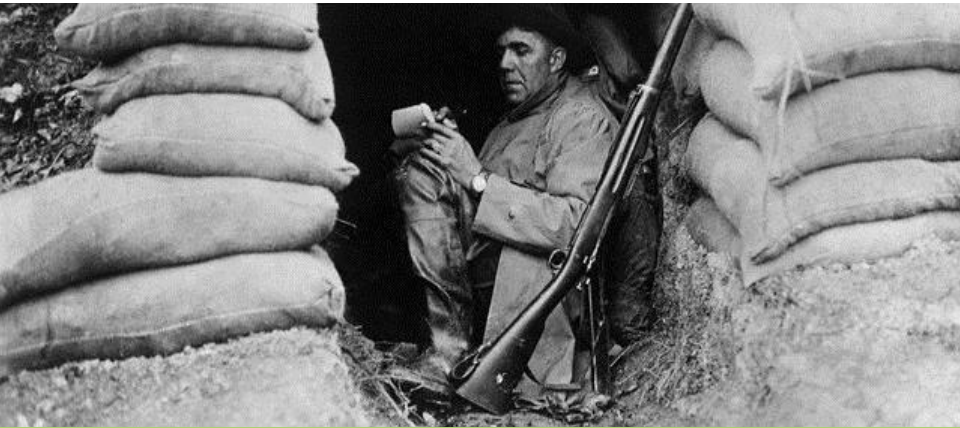
(801) 581-7090 | <http://www.writing.utah.edu>

WRTG 3019

WRITING ABOUT WAR

Spring 2022 TuTh 12:25pm - 1:45pm

Designed to help students develop and refine their reading, writing, and communication skills by examining and articulating their perspectives of war. Students will study the work of established authors and write multiple genres, including nonfiction, fiction, and analysis. Open to all students, but men and women in uniform and veterans are encouraged to enroll.



“A true war story, if truly told, makes the stomach believe.”
“And in the end, of course, a true war story is never about war.”
— Tim O’Brien, from *The Things They Carried*

Students must take WRTG 2010 or equivalent prior to taking this course.

Fulfills Communication/Writing (CW) & Humanities Exploration (HF)



**DEPARTMENT OF WRITING
& RHETORIC STUDIES**

THE UNIVERSITY OF UTAH

225 S Central Campus Drive Room 3700
Salt Lake City, UT 84112
(801) 581-7090 | <http://www.writing.utah.edu>

WRTG 3040

Digital Storytelling

Spring 2022 Hybrid Tu 10:45am - 12:10pm

Digital Storytelling takes new tools and techniques, computers and software, to update the ancient craft of telling tales. Learn to apply your writing ability with digital imaging and editing tools to tell a series of illustrated, real-life stories using pictures and narration in ways that are engaging and exciting.



Students must take WRTG 2010 or equivalent prior to taking this course.

Fulfills Humanities Exploration (HF)



**DEPARTMENT OF WRITING
& RHETORIC STUDIES**

THE UNIVERSITY OF UTAH

225 S Central Campus Drive Room 3700
Salt Lake City, UT 84112
(801) 581-7090 | <http://www.writing.utah.edu>

WRTG 3420

ENVIRONMENTAL WRITING

Fulfills Upper Division Communication/Writing (CW)

INVESTIGATIVE NONFICTION: ENVIRONMENTAL ISSUES IN THE AMERICAN WEST

Students benefit from interacting with the physical or material aspects of their subjects, and by talking with the people—citizens, government officials, and others—whose lives, livelihoods, and communities are or will be affected by (usually much needed) changes to environmental policy. Of course students are trained to address differing written perspectives, but if we hope to understand all that is involved with the positions we take on environmental issues and to effect lasting change, we must learn how to talk to one another face-to-face.



Students must take WRTG 2010 or equivalent prior to taking this course.

Spring 2022 MoWe 3:00pm - 4:20pm



**DEPARTMENT OF WRITING
& RHETORIC STUDIES**

THE UNIVERSITY OF UTAH

225 S Central Campus Drive Room 3700
Salt Lake City, UT 84112
(801) 581-7090 | <http://www.writing.utah.edu>

WRTG 3510

GRAMMAR & STYLISTICS FOR ACADEMIC WRITING

Spring 2022

This course has three main purposes:

1. To address various stylistic and grammatical issues
2. To give students individualized help with their writing
3. To provide an understanding of the linguistic underpinnings of writing.



Learn about “awkward” sentences, pronoun case, argument structure, who vs. whom, punctuation, word order, modifiers, concision, emphasis, syntax, and ethics from a rhetorical and functional perspective.

Students must take WRTG 2010 or equivalent prior to taking this course.

Fulfills Upper Division Communication/Writing (CW)



**DEPARTMENT OF WRITING
& RHETORIC STUDIES**

THE UNIVERSITY OF UTAH

225 S Central Campus Drive Room 3700
Salt Lake City, UT 84112
(801) 581-7090 | <http://www.writing.utah.edu>

WRTG 3870

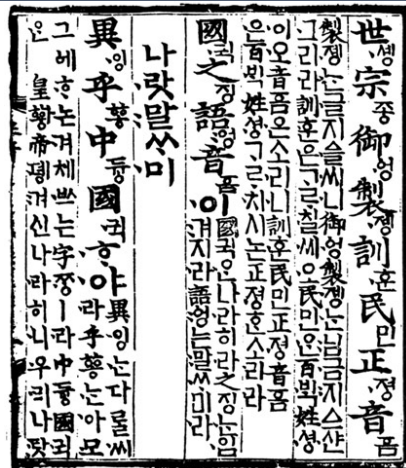
WRITING AS SOCIAL PRACTICE

In this course, students are introduced to key theories of writing. Emphasis is placed on the cultural, social, and rhetorical practices that have given rise to and shape writing processes, documents, and ultimately writers themselves. Students will encounter various forms of writing, and theories that consider the impact of material and social factors, such as education on writing systems, and theories that consider the writer/reader relationship that is established through writing.



Required Course for Major & Minor

Fulfills Humanities Exploration (HF)



Students must take WRTG 2010 or equivalent prior to taking this course.

Spring 2022 Online



DEPARTMENT OF WRITING
& RHETORIC STUDIES

THE UNIVERSITY OF UTAH

225 S Central Campus Drive Room 3700
Salt Lake City, UT 84112

(801) 581-7090 | <http://www.writing.utah.edu>

WRTG 3875

HISTORIES & THEORIES OF RHETORIC

Spring 2022 TuTh 10:45am - 12:05pm

This course offers a contextualized overview of rhetorical theories and practices across temporal-spatial boundaries and develops a much-needed dialogue between different rhetorical traditions. Informed by readings in historical, comparative, cultural, postcolonial, and decolonial studies, the course provides students with the background, disciplinary histories, and foundational readings in pivotal theoretical debates and situated practices over language, culture, power, and political subjectivity.

Required Course for Major & Minor



Students must take WRTG 2010 or equivalent prior to taking this course.

Fulfills Humanities Exploration (HF)



**DEPARTMENT OF WRITING
& RHETORIC STUDIES**

THE UNIVERSITY OF UTAH

225 S Central Campus Drive Room 3700
Salt Lake City, UT 84112

(801) 581-7090 | <http://www.writing.utah.edu>

WRTG 4002

GRANT WRITING

Spring 2022

Online

This course will provide students with principles for and practices of effective grant writing. Focus on identifying funding sources, articulating problem statements, understanding and addressing funding criteria, writing collaboratively, and managing documents through funding cycles.



Fulfills Upper Division Communication/Writing (CW)



**DEPARTMENT OF WRITING
& RHETORIC STUDIES**

THE UNIVERSITY OF UTAH

225 S Central Campus Drive Room 3700
Salt Lake City, UT 84112
(801) 581-7090 | <http://www.writing.utah.edu>

WRTG 4030

VISUAL RHETORIC

Fulfills Upper Division Communication/Writing (CW)
& Quantitative Reasoning (QB)



In Writing 4030, we'll discuss theories of visual perception and rhetorically analyze different types of persuasive texts—including **comics**, short **films**, **advertisements**, journalistic **photographs**, **web sites**, and **graphs & charts**. You'll examine the kinds of visual arguments used in your own discipline, as well as compose your own information visualization texts.

Signification, or meaning, of any text is made up not only of its verbal but also its visual elements—layout, color, typography, illustrations, etc. These elements contribute to the text's argument and the ways that it is interpreted by audiences.

Spring 2022 Online or In-Person

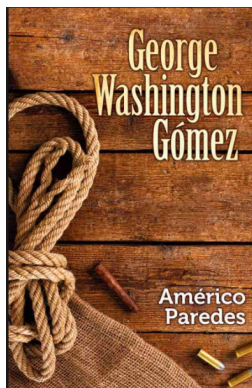
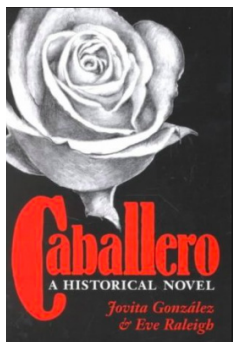
Students must take WRTG 2010 or equivalent prior to taking this course.

WRTG 4050

WRITING & CULTURAL RHETORICS

Spring 2022 TuTh 2:00pm - 3:20pm

WRTG 4050 focuses on the rhetorical traditions and practices of specific communities and peoples, often (although not always) focusing on the emplaced histories and contemporary rhetorics of groups who have not been included in the Greco-Roman-Western tradition. The course examines how these communities develop rhetorics to identify themselves and enact political and social change, often by drawing on distinctive cultural resources.



Students must take WRTG 2010 or equivalent prior to taking this course.

Fulfills Diversity (DV)



**DEPARTMENT OF WRITING
& RHETORIC STUDIES**

THE UNIVERSITY OF UTAH

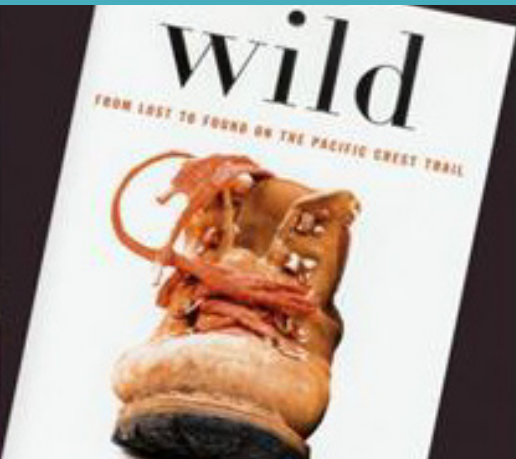
225 S Central Campus Drive Room 3700
Salt Lake City, UT 84112

(801) 581-7090 | <http://www.writing.utah.edu>

WRTG 4200

WRITING POPULAR NONFICTION

Spring 2022 TuTh 12:25pm - 1:45pm



Dog-eared copies of Elie Wiesel's *Night*, Truman Capote's *In Cold Blood*, and Thoreau's *Walden* have cluttered the shelves of bookish types for years. But what do we make of more recent trends—Cheryl Strayed's *Wild* or David Sedaris' *Naked*, Mary Roach's *Stiff*?

WRTG 4200 will pay special attention to recent popular works of nonfiction, exploring why audiences love them, how they're written, and how they fit into the history of the genre. Students will also craft their own nonfiction works and learn how to polish their voice, their writing style, and stories.

Students must take WRTG 2010 or equivalent prior to taking this course.

Fulfills Upper Division Communication/Writing (CW)



**DEPARTMENT OF WRITING
& RHETORIC STUDIES**

THE UNIVERSITY OF UTAH

225 S Central Campus Drive Room 3700
Salt Lake City, UT 84112
(801) 581-7090 | <http://www.writing.utah.edu>

WRTG 4850

TECHNICAL EDITING

Spring 2022 TuTh 2:00pm - 3:20pm

Principles and practices of technical editing are the focus of this course. Students will explore the roles of technical editors in manuscript preparation of both hard copy and digital texts. Students will also learn strategies for different levels of copyediting, including comprehensive copyediting and line editing, using both practice documents and texts for a client.

Students from related disciplines welcome.



Students must take WRTG 2010 or equivalent prior to taking this course.

WRTG 4905

DISCOURSES OF LAW: STUDIES IN PROFESSIONAL DISCOURSES

Spring 2022 TuTh 12:25pm - 1:45pm

Course Description coming soon.



Students must take WRTG 2010 or equivalent prior to taking this course.

Fulfills Upper Division Communication/Writing (CW)



**DEPARTMENT OF WRITING
& RHETORIC STUDIES**

THE UNIVERSITY OF UTAH

225 S Central Campus Drive Room 3700
Salt Lake City, UT 84112
(801) 581-7090 | <http://www.writing.utah.edu>

WRTG 4970

RHETORICS OF GENDER

Spring 2022 MoWe 11:50am - 1:10pm

This course is designed to give students an introduction to gender research that is distinctly rhetorical. Students will use theories from contemporary and classical rhetoric and criticism to interrogate the construction and performance of gender in a variety of social settings and media, the gendering of the writing studies/writing instruction, and the gendering of the tradition of rhetoric itself.



Students must take WRTG 2010 or equivalent prior to taking this course.

Fulfills Upper Division Communication/Writing (CW)



**DEPARTMENT OF WRITING
& RHETORIC STUDIES**

THE UNIVERSITY OF UTAH

225 S Central Campus Drive Room 3700
Salt Lake City, UT 84112
(801) 581-7090 | <http://www.writing.utah.edu>

WRTG 5990

SENIOR SEMINAR

Spring 2022 MoWe 1:25pm - 2:45pm

WRTG 5990 provides students a capstone experience as they finish their Writing & Rhetoric Studies (WRS) major and prepare to move onto the next stage of their education or career. To prepare for this next stage, students will complete a professional communication sequence. Students will also have the opportunity to listen to and engage with scholars and professionals as they present over their research interests or line of work with regard to writing and/or rhetoric. In addition, students will plan and execute a substantive semester-long rhetorical project, exploring topics, issues, or problems situated in the workplace, civic setting, or artistic or literary context. To conclude the capstone experience, the course will ask students to bring together aspects of their previous courses and their experiences in those courses and showcase learning through individual portfolios.



ALL WRS MAJORS MUST TAKE THIS COURSE



**DEPARTMENT OF WRITING
& RHETORIC STUDIES**

THE UNIVERSITY OF UTAH

225 S Central Campus Drive Room 3700
Salt Lake City, UT 84112
(801) 581-7090 | <http://www.writing.utah.edu>

WRTG 6400

THEORIES & PEDAGOGIES OF MULTILINGUAL WRITING

Addresses issues in multilingual writers' compositions, especially in English as a non-native language. Explores and integrates approaches from the fields of rhetoric and composition, second-language writing, and applied linguistics, as they apply to the teaching of writing.



Spring 2022



**DEPARTMENT OF WRITING
& RHETORIC STUDIES**

THE UNIVERSITY OF UTAH

225 S Central Campus Drive Room 3700
Salt Lake City, UT 84112
(801) 581-7090 | <http://www.writing.utah.edu>

WRTG 7750

RHETORIC II: EARLY-MODERN TO CONTEMPORARY RHETORIC

Spring 2022 Mo 3:00pm - 6:00pm

A survey of early modern and post-modern rhetorical theories, beginning in the 17th Century and working through to contemporary rhetorical theories. Readings, assignments, and class discussions trace the developments of early-modern to contemporary rhetorical theories through primary texts. Contemporary applications of previous rhetorical theories are also covered. Course emphases may vary by instructor/semester.



**DEPARTMENT OF WRITING
& RHETORIC STUDIES**

THE UNIVERSITY OF UTAH

225 S Central Campus Drive Room 3700
Salt Lake City, UT 84112

(801) 581-7090 | <http://www.writing.utah.edu>

WRTG 7760

RHETORIC/COMPOSITION/ DISCOURSE

Spring 2022 Thur 12:25pm - 3:20pm

Course Description coming soon.



**DEPARTMENT OF WRITING
& RHETORIC STUDIES**

THE UNIVERSITY OF UTAH

225 S Central Campus Drive Room 3700
Salt Lake City, UT 84112
(801) 581-7090 | <http://www.writing.utah.edu>